

ENG 121



**ALUPE UNIVERSITY  
COLLEGE**

*Bastion of Knowledge...*

**ALUPE UNIVERSITY COLLEGE  
LIBRARY**

P.O. Box 845-50-100 Busia (K)

principal@alupe.ac.ke

Tel: +254 741 217 183

+254 736 044 469

off Busier- Malaba road

OFFICE OF THE DEPUTY PRINCIPAL  
ACADEMICS, STUDENT AFFAIRS AND RESEARCH

---

# UNIVERSITY EXAMINATIONS

## 2017 /2018 ACADEMIC YEAR

FIRST YEAR SECOND SEMESTER REGULAR EXAMINATION

**FOR THE DEGREE OF BACHELOR OF  
EDUCATION (ARTS)**

**COURSE CODE:                   ENG 121**

**COURSE TITLE:                INTRODUCTION TO ENGLISH  
  PHONETICS AND PHONOLOGY**

**DATE: 19<sup>TH</sup> APRIL, 2018**

**TIME: 2 PM – 5 PM**

---

### INSTRUCTION TO CANDIDATES

- SEE INSIDE

THIS PAPER CONSISTS OF 3 PRINTED PAGES

PLEASE TURN OVER

**ENG121: INTRODUCTION TO ENGLISH PHONETICS AND PHONOLOGY****STREAM: B.ED (ARTS)****DURATION: 3 HOURS****INSTRUCTIONS TO CANDIDATES**

- i. Answer Question **ONE** and any other **TWO** questions.*
- ii. Do not write on the question paper.*

**Question One**

- a) Using appropriate examples, discuss any **FOUR** parameters used in classification of English consonant sounds. (16 Marks)
- b) Explain the **THREE** major categories of English vowel sounds. (9 Marks)
- c) Distinguish between phonetics and phonology. (5 Marks)

**Question Two**

- a) Using appropriate examples, discuss what is meant by each of the following:
  - i) phones
  - ii) allophones
  - iii) phoneme (9 Marks)
- b) Transcribe the following words:
  - i) tomb
  - ii) branch
  - iii) potato
  - iv) collection

v) boys

vi) car

(9 Marks)

c) What are syllabic consonants?

(2 Marks)

### Question Three

a) i) Using any THREE parameters, describe the vowel sounds. Give an appropriate each.

(6Marks)

ii) Using the cardinal vowel diagram, explain the classification of vowels according to position of the tongue.

(9 Marks)

b) Distinguish between primary stress and secondary stress. Give a relevant example for each.

(5 Marks)

### Question Four

a) Explain each of the terms below as used in the study of phonology:

i) plosives

ii) fricatives

iii) affricates

iv) approximants

v) trill

(15 Marks)

b) With regard to the syllable, explain the following terms:

i) onset

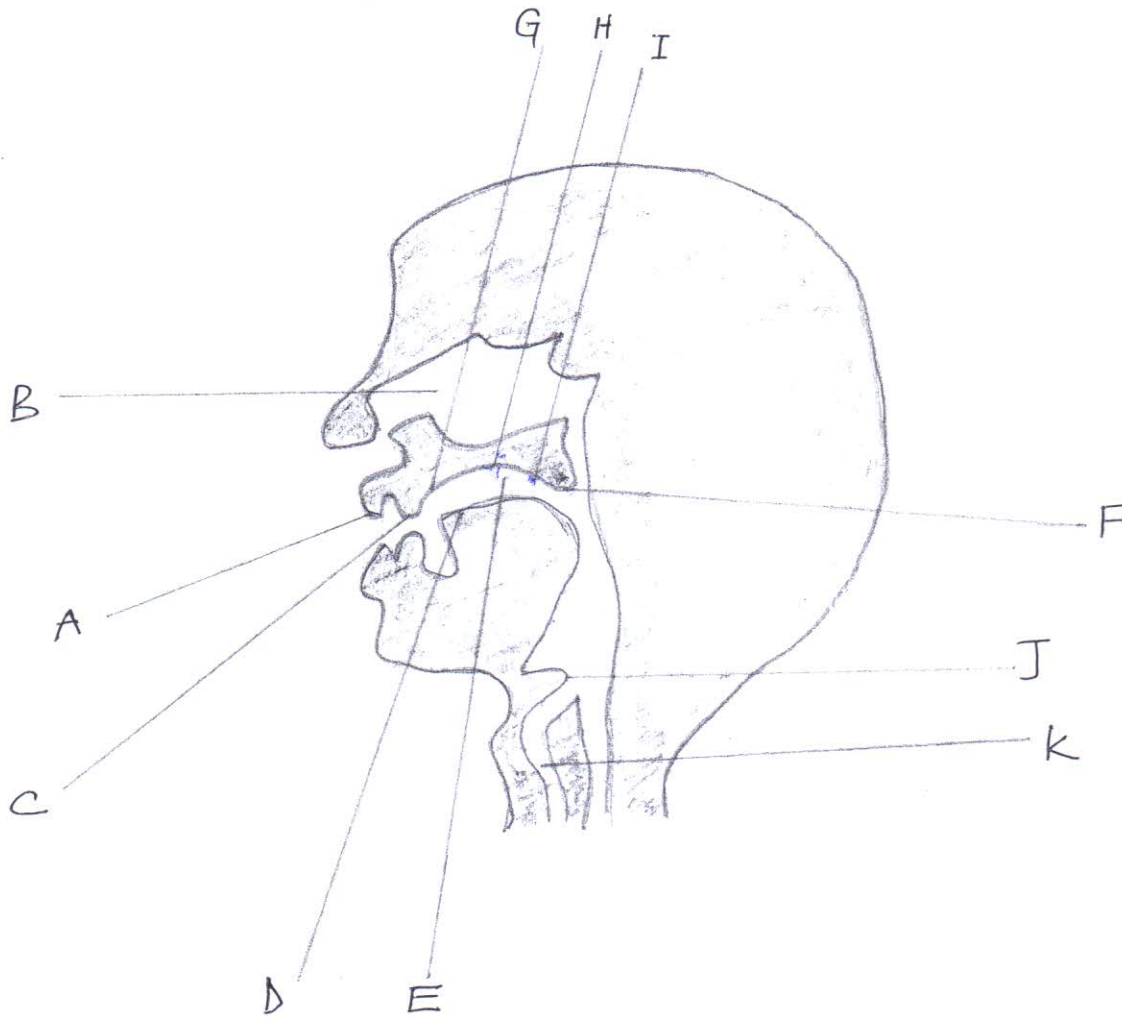
ii) coda

(5 Marks)

**Question Five**

Study the figure below carefully and use it to answer the questions that follow.

a) Identify the speech production areas labeled A-K in the figure below: (11 Marks)



b) Identify at least one English sound produced at points: A, B, C, G, H, I. (6 Marks)

c) Differentiate between sounds produced at point B and E. (3 Marks)

\*\*\*\*\*